

# Dahua | EZ-IP Series Product Introduction

# Overview

The new Dahua EZ-IP series delivers entry level IP products with outstanding price performance and simplicity. EZ-IP is perfect for small to medium size applications like home/residential security, small retail shops, and other typical SMB applications. At the same time, the EZIP series offers a perfect alternative to migrate from analog to an IP system with its easy to use nature and cost effectiveness.

The new series includes IP camera and NVR products that support real-time monitoring, video storage, playback, and alarm.

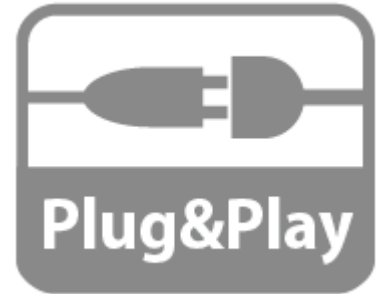
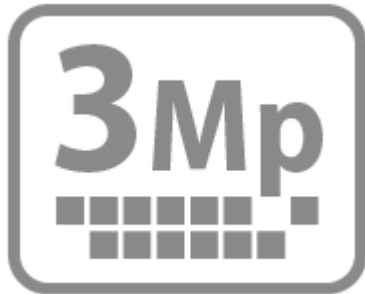
The new EZ-IP series is fully in line with Dahua's quality assurance protocol. Stable and reliable components are utilized and various tests such as anti-vibration, water resistance, and aging tests are performed to ensure Dahua quality standards.

Dahua new EZ-IP series is a security solution for ALL.

## Objective

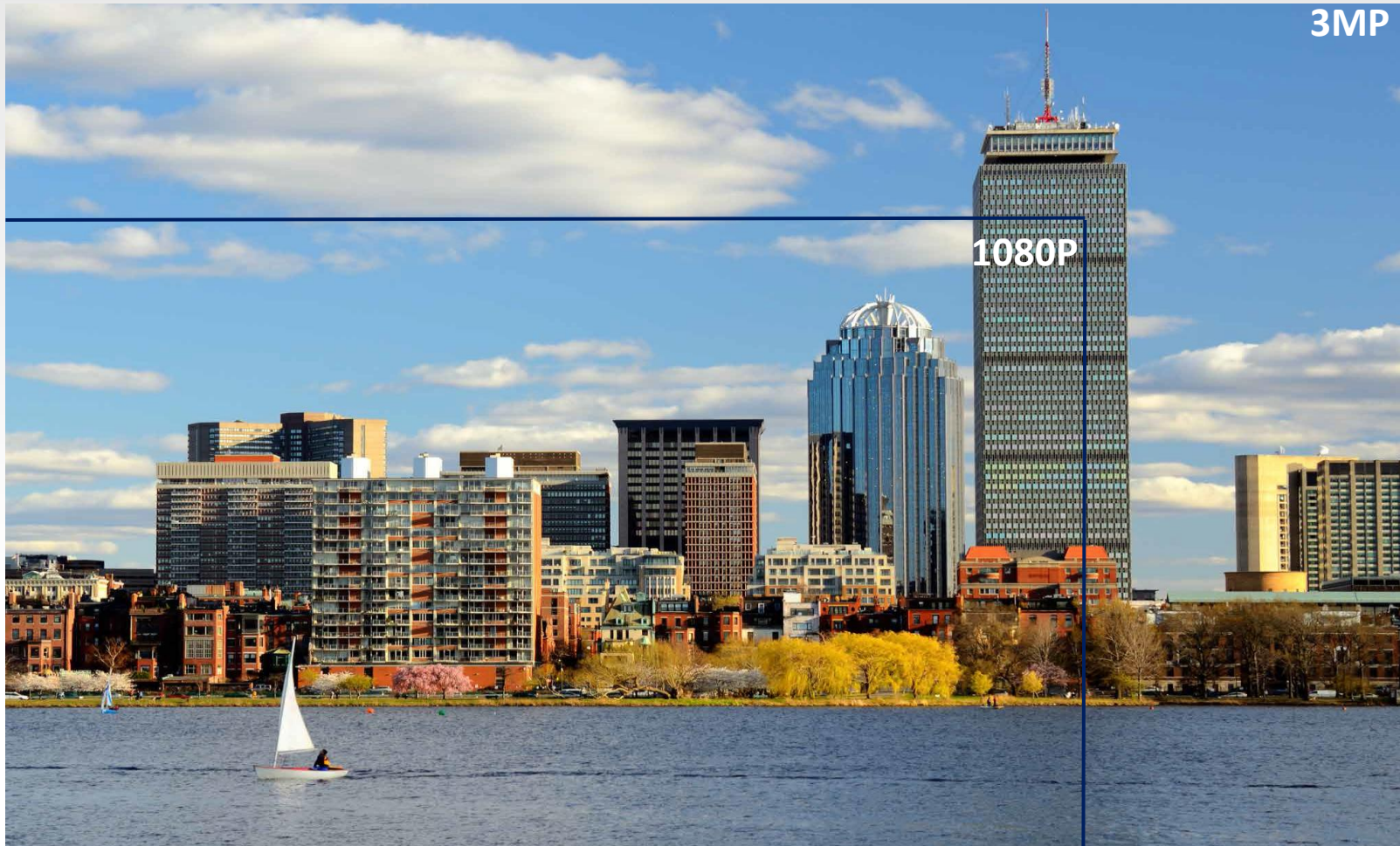
- To meet the growing demand of outstanding price performance cameras, Dahua will release their EZ-IP series Network Camera to the entry-level and mid-range market.
- Offers a perfect alternative to migrate from existing analog to IP system with its easy to use/operate nature and its cost effectiveness.
- Provide a perfect solution for small to medium size applications like home/residential security, small business retail shop and other typical SMB applications.

# Key Features of EZ-IP Series



# EZ-IP | 2MP & 3MP Resolution

The new EZ-IP series camera offers 2MP & 3MP resolution which is enough to cater to the needs for home/residential and SMB applications.





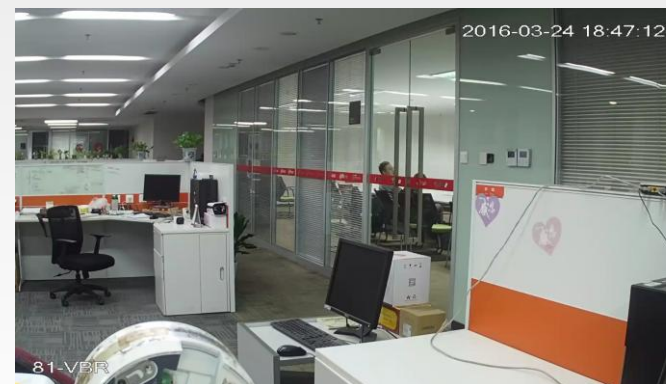
# EZ-IP | Smart H.264+

The new EZ-IP series uses Smart H.264+ encoding technology which decreases bandwidth requirements by up to 70%, saving on transmission and storage costs.

Outdoor



Indoor



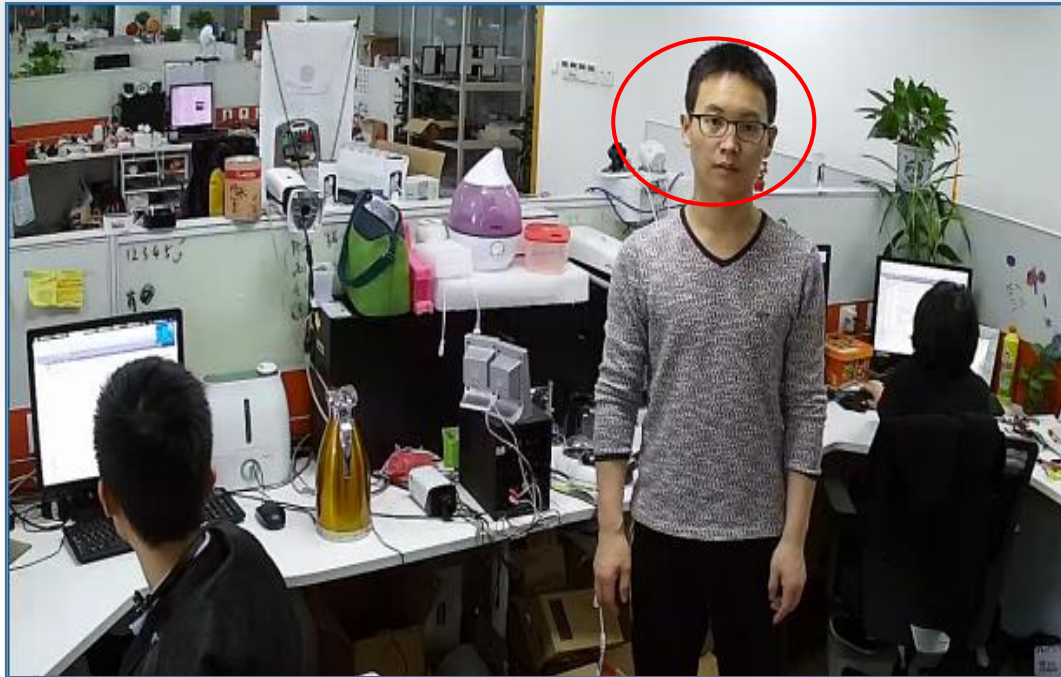
	H.264	H.264+	H.264	H.264+
Storage size	41.33GB	22.04GB	40.96GB	12.21GB
Saving (v.s. H.264)	-	46.7%	-	70.19%

24 Hour continue recording (1080P@25fps)

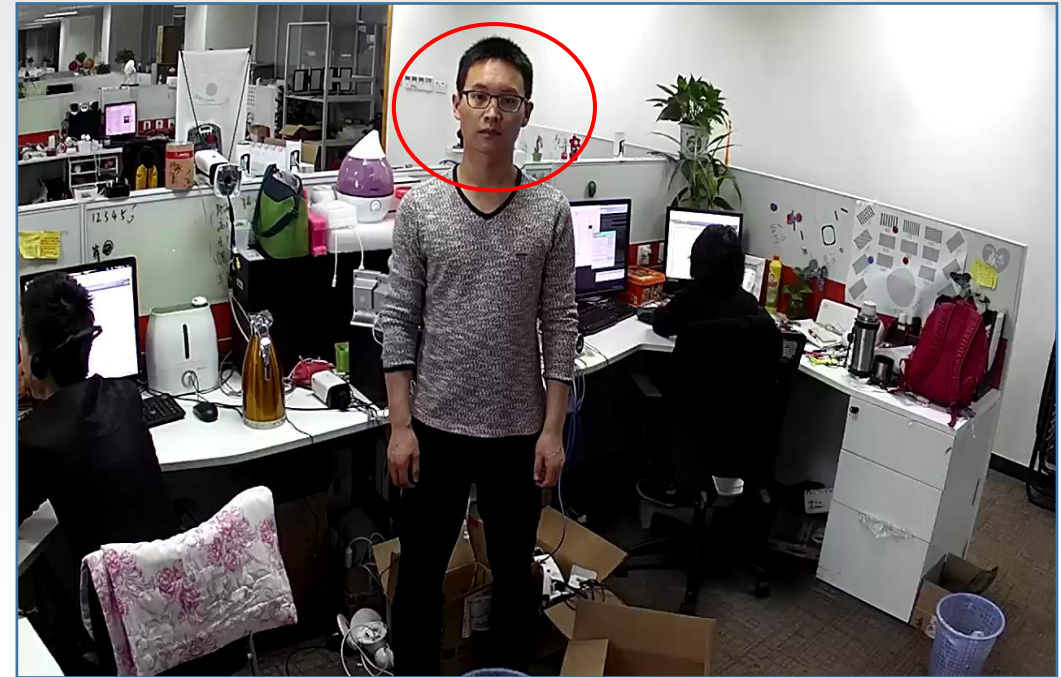
*\*The above figures are based on real test conditions and the bit rate reduction may vary depending on the light and movement conditions and details of the scene.*

# EZ-IP | Face Enhancement

ROI (Region of Interest) technology allows the new EZ-IP series to enhance facial images, which helps users identify persons of interest with clearer, more detailed portraits.



EZ-IP



Others

## EZ-IP | Weatherproof Design

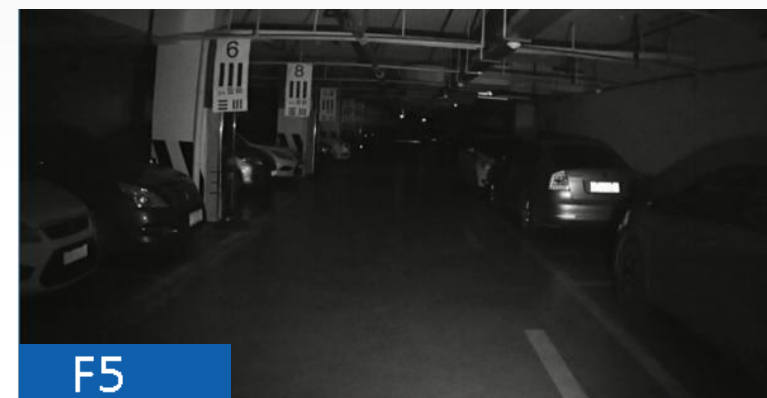
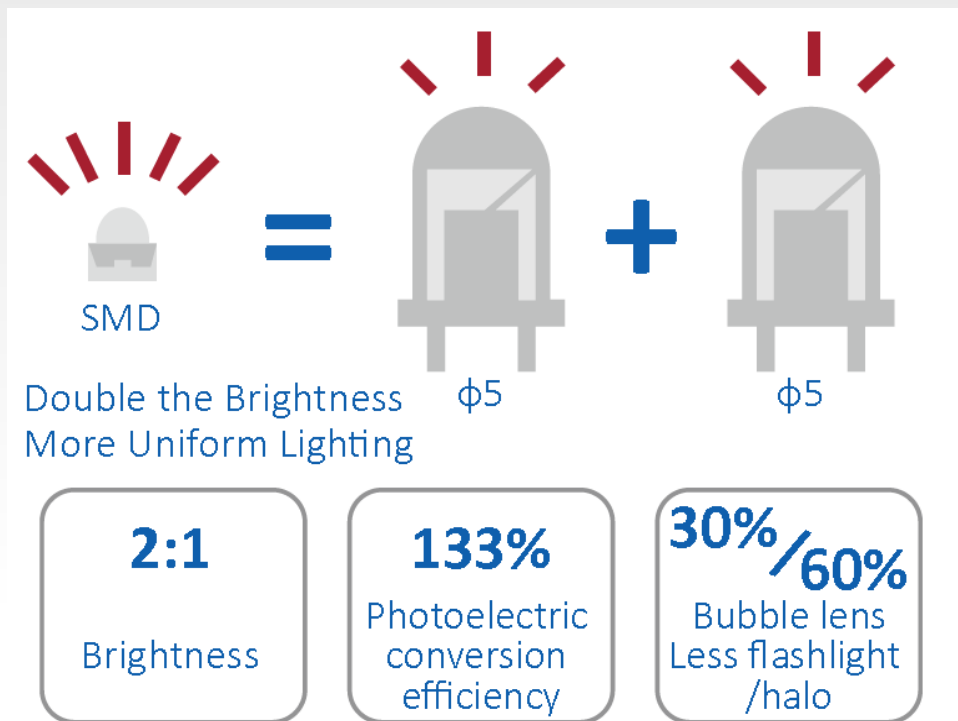
A metal body and weather-proof design allows the camera to be used in outdoor applications. All models have an IP67 rating.





# EZ-IP | SMD IR LED

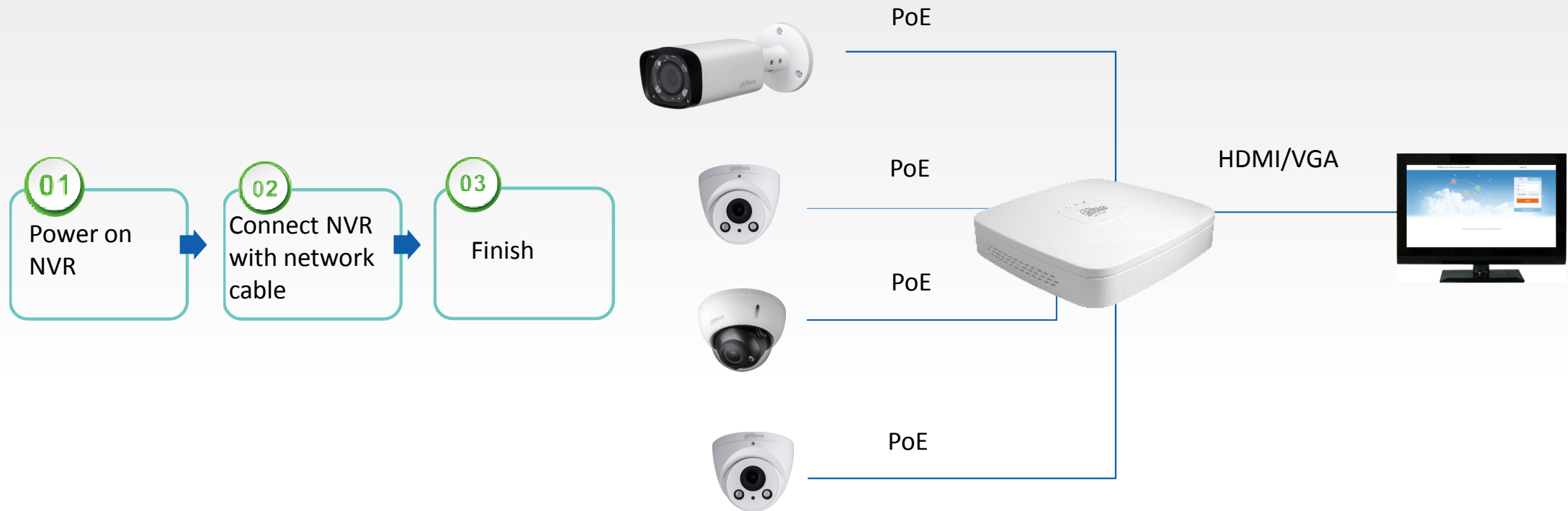
Superior IR performance is achieved using Microcrystalline IR LEDs with special packaging heat dissipation technology. Compared to traditional  $\phi 5$  LEDs, SMD IR LEDs provide double the brightness and better uniform lighting.





# EZ-IP | Plug&Play

Easy and simple operation is one of the important features customers care about. EZ-IP series cameras all feature PoE, enabling users to simply plug & play with PoE NVRs.



# Product Family of EZ-IP Series



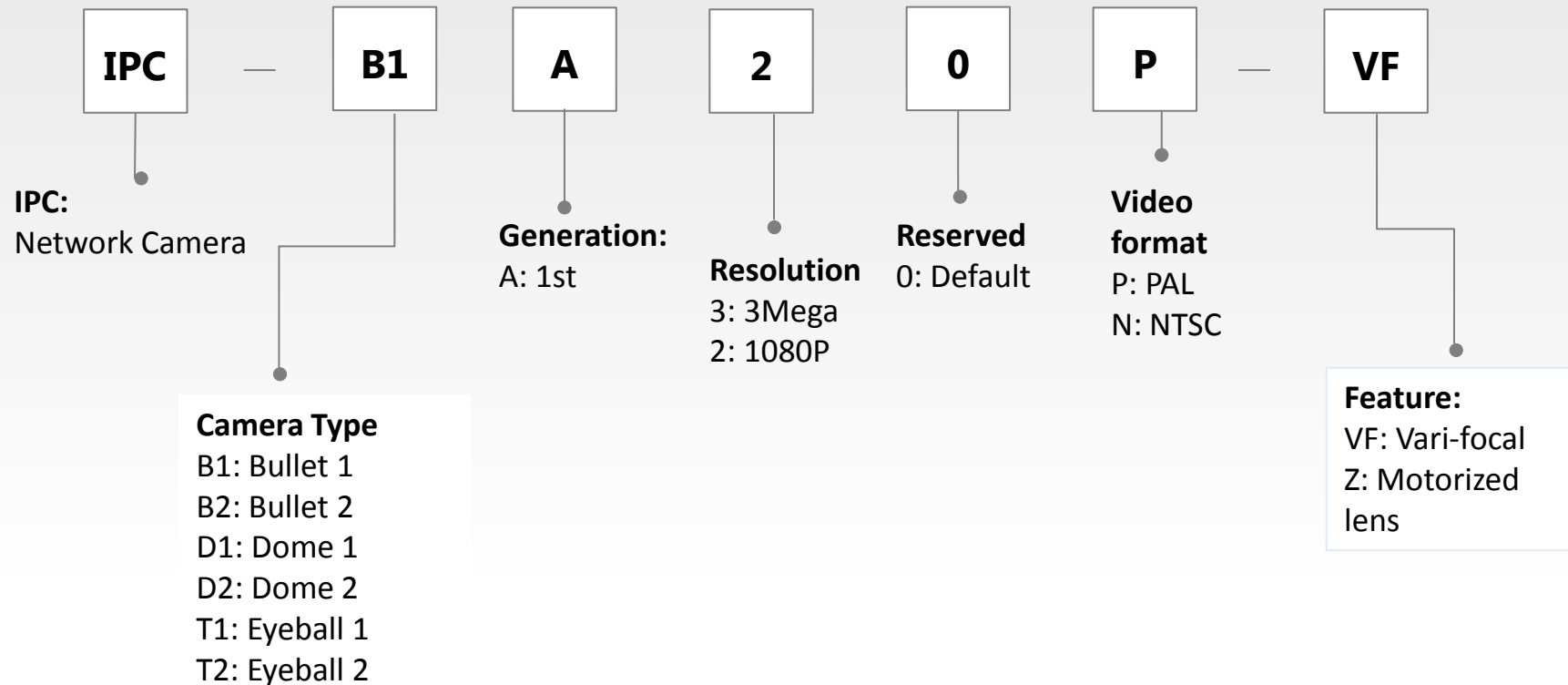
EZ-IP Network  
Camera



EZ-IP Network  
Video Recorder

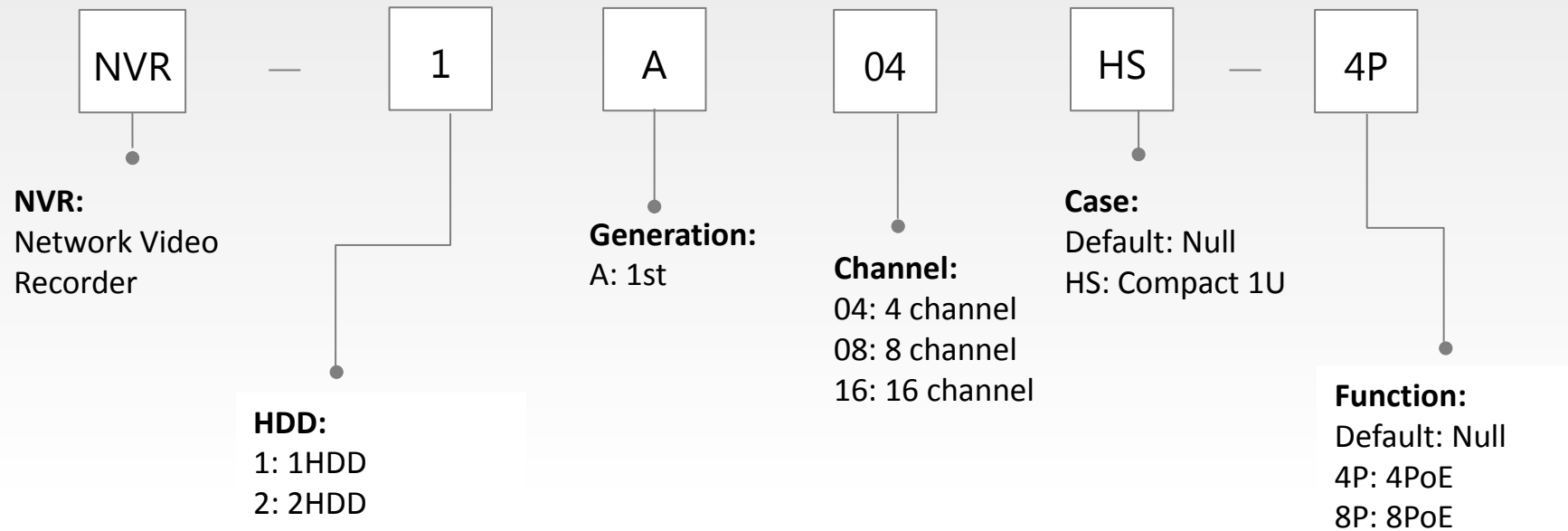
# Naming Rule

## Naming Rule of EZ-IP Camera:



# Naming Rule

## Naming Rule of EZ-IP NVR:





# EZ-IP Camera



IPC-B1A20

IPC-D1A20

IPC-T1A20

IPC-B2A20-VF/Z

IPC-D2A20-VF/Z

IPC-T2A20-Z

IPC-B1A30

IPC-D1A30

IPC-T1A30

IPC-B2A30-VF/Z

IPC-D2A30-VF/Z

IPC-T2A30-Z

**Fixed Lens**

**Vari-focal Lens**

# EZ-IP NVR



NVR1A04-4P

NVR1A08-8P

NVR2A16

NVR1A04HS(-4P)

NVR1A08HS(-8P)

# Product Features

IPC-B1A20	IPC-B1A30
1/2.9" 2Megapixel progressive CMOS	1/3" 3Megapixel progressive CMOS
DWDR, Day/Night(ICR), 3DNR, AWB, AGC, BLC	DWDR, Day/Night(ICR), 3DNR, AWB, AGC, BLC
25/30fps@2M(1920 × 1080)	20fps@3M(2048 × 1536)&25/30fps@1080P(1920 × 1080)
<ul style="list-style-type: none"> <li>• <b>H.264+ &amp; H.264</b> dual-stream encoding</li> <li>• Multiple network monitoring: Web viewer, CMS(DSS/PSS) &amp; DMSS</li> <li>• <b>2.8 mm</b> fixed lens (<b>3.6mm</b> optional)</li> <li>• Max IR LEDs Length <b>30m</b></li> <li>• <b>IP67, PoE</b></li> </ul>	



# Product Features

IPC-D1A20	IPC-D1A30
1/2.9" 2Megapixel progressive CMOS	1/3" 3Megapixel progressive CMOS
DWDR, Day/Night(ICR), 3DNR, AWB, AGC, BLC	DWDR, Day/Night(ICR), 3DNR, AWB, AGC, BLC
25/30fps@1080P(1920×1080)	20fps@3M(2048×1536)&25/30fps@1080P(1920×1080)
<ul style="list-style-type: none"> <li>• <b>H.264+ &amp; H.264</b> dual-stream encoding</li> <li>• Multiple network monitoring: Web viewer, CMS(DSS/PSS) &amp; DMSS</li> <li>• <b>2.8 mm</b> fixed lens (<b>3.6mm</b> optional)</li> <li>• Max IR LEDs Length <b>30m</b></li> <li>• <b>IP67, IK10, PoE</b></li> </ul>	





# Product Features

IPC-T1A20	IPC-T1A30
1/2.9" 2Megapixel progressive CMOS	1/3" 3Megapixel progressive CMOS
DWDR, Day/Night(ICR), 3DNR, AWB, AGC, BLC	DWDR, Day/Night(ICR), 3DNR, AWB, AGC, BLC
25/30fps@1080P(1920 × 1080)	20fps@3M(2048 × 1536)&25/30fps@1080P(1920 × 1080)
<ul style="list-style-type: none"> <li>· <b>H.264+ &amp; H.264</b> dual-stream encoding</li> <li>· Multiple network monitoring: Web viewer, CMS(DSS/PSS) &amp; DMSS</li> <li>· <b>2.8 mm</b> fixed lens (<b>3.6mm</b> optional)</li> <li>· Max IR LEDs Length <b>30m</b></li> <li>· <b>IP67, PoE</b></li> </ul>	



# Product Features

IPC-B2A20-VF/Z	IPC-B2A30-VF/Z
1/2.9" 2Megapixel progressive Starvis CMOS	1/3" 3Megapixel progressive CMOS
DWDR, Day/Night(ICR), 3DNR, AWB, AGC, BLC	DWDR, Day/Night(ICR), 3DNR, AWB, AGC, BLC
25/30fps@1080P(1920 × 1080)	20fps@3M (2048x1536)&25/30fps@1080P(1920 x1080)

- **H.264+ & H.264** dual-stream encoding
- Multiple network monitoring: Web viewer, CMS(DSS/PSS) & DMSS
- **2.7~12mm** varifocal lens
- Max IR LEDs Length **60m**
- Micro SD card slot, up to **128GB**
- **IP67, PoE**



# Product Features

IPC-D2A20-VF/Z	IPC-D2A30-VF/Z
1/2.9" 2Megapixel progressive CMOS	1/3" 3Megapixel progressive CMOS
DWDR,Day/Night(ICR), 3DNR, AWB, AGC, BLC	DWDR,Day/Night(ICR), 3DNR, AWB, AGC, BLC
25/30fps@2M(1920×1080)	20fps@3M(2048×1536)&25/30fps@1080P(1920×1080)

- **H.264+ & H.264** dual-stream encoding
- Multiple network monitoring: Web viewer, CMS(DSS/PSS) & DMSS
- **2.7~12mm** varifocal lens
- Max IR LEDs Length **30m**
- Micro SD card slot, up to **128GB**
- **IP67, IK10, PoE**



# Product Features

IPC-T2A20-Z	IPC-T2A30-Z
1/2.9" 2Megapixel progressive CMOS	1/3" 2Megapixel progressive CMOS
DWDR,Day/Night(ICR), 3DNR, AWB, AGC, BLC	DWDR,Day/Night(ICR), 3DNR, AWB, AGC, BLC
25/30fps@2M (1920×1080)	20fps@3M(2048×1536)&25/30fps@1080P(1920×1080)

- **H.264+ & H.264** dual-stream encoding
- Multiple network monitoring: Web viewer, CMS(DSS/PSS) & DMSS
- **2.7~12mm** varifocal lens
- Max IR LEDs Length **60m**
- Micro SD card slot, up to **128GB**
- **IP67, PoE**





# Product Features

## NVR1A04-4P





- **H.264+ & H.264** dual-stream decoding
- Max **80Mbps** incoming bandwidth
- Up to 6Mp resolution preview & playback
- Up to **1ch@4K/4ch@1080P** decoding capacity
- HDMI/VGA simultaneous video output
- Plug & Play, **4PoE**

## NVR1A08-8P



- **H.264+ & H.264** dual-stream decoding
- Max **80Mbps** incoming bandwidth
- Up to 6Mp resolution preview & playback
- Up to **1ch@4K/4ch@1080P** decoding capacity
- HDMI/VGA simultaneous video output
- Plug & Play, **8PoE**

# Product Features

NVR1A04HS	NVR1A08HS
	
<ul style="list-style-type: none"> <li>· <b>H.264+ &amp; H.264</b> dual-stream decoding</li> <li>· Max <b>80Mbps</b> incoming bandwidth</li> <li>· Max 4ch IP camera inputs</li> <li>· Up to 6Mp resolution preview &amp; playback</li> <li>· Up to <b>1ch@4K/4ch@1080P</b> decoding capacity</li> <li>· HDMI/VGA simultaneous video output</li> </ul>	<ul style="list-style-type: none"> <li>· <b>H.264+ &amp; H.264</b> dual-stream decoding</li> <li>· Max <b>80Mbps</b> incoming bandwidth</li> <li>· Max 8ch IP camera inputs</li> <li>· Up to 6Mp resolution preview &amp; playback</li> <li>· Up to <b>1ch@4K/4ch@1080P</b> decoding capacity</li> <li>· HDMI/VGA simultaneous video output</li> </ul>

# Product Features

## NVR1A04HS-4P



- **H.264+ & H.264** dual-stream decoding
- Max **80Mbps** incoming bandwidth
- Max 4ch IP camera inputs
- Up to 6Mp resolution preview & playback
- Up to **1ch@4K/4ch@1080P** decoding capacity
- HDMI/VGA simultaneous video output
- Plug & Play, **4PoE**

## NVR1A08HS-8P



- **H.264+ & H.264** dual-stream decoding
- Max **80Mbps** incoming bandwidth
- Max 8ch IP camera inputs
- Up to 6Mp resolution preview & playback
- Up to **1ch@4K/4ch@1080P** decoding capacity
- HDMI/VGA simultaneous video output
- Plug & Play, **8PoE**

# Product Features

## NVR2A16



- **H.264+ & H.264** dual-stream decoding
- Max **80Mbps** incoming bandwidth
- Max 16ch IP camera inputs
- Up to 6Mp resolution preview & playback
- Up to **1ch@4K/4ch@1080P** decoding capacity
- HDMI/VGA simultaneous video output

# Typical applications



# Application

**Vertical Applications:** Retail, Leisure and other typical SMB applications.

## Benefits:

- 1. Monitor entrance and exits
- 2. External Monitoring
- 3. Cashier safety
- 4. Turnover growth
- 5. Real time protection



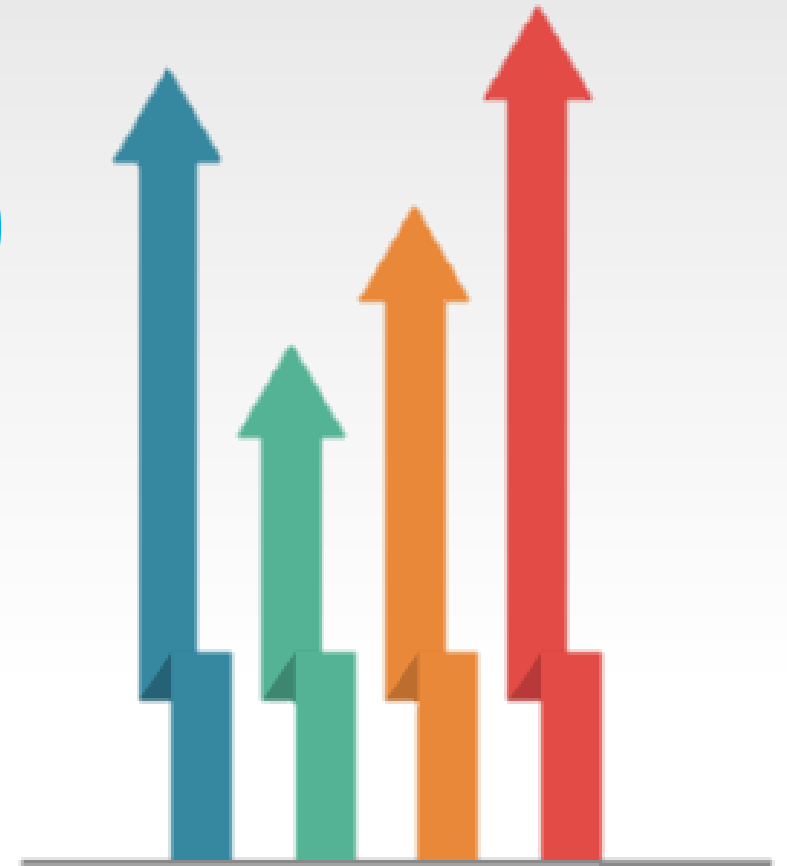
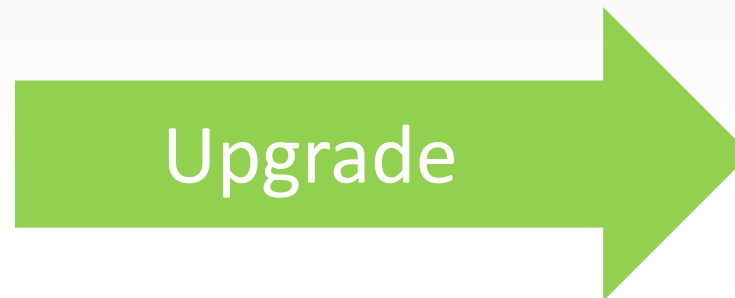


# Application

## Vertical Applications: Analog to IP system migration

### Benefits:

1. Easy to use
2. Cost effective
3. HD Surveillance
4. Remote control



# Application

## Vertical Applications: Banking and finance

### Benefits:

1. Monitor entrance and exits
2. Monitor Lobby
3. Monitor Cash Transaction Area
4. Monitor ATM Area
5. Monitor Outdoor



The smart security, **I P**romise you.

Thank you